

# Detaljni Urbanistički Plan "Ulcinjско Polje" Situacija urbanističke parcele br:23 zona "C" podzona "14"

URBANISTIČKA PARCELA BR.23=500M2

-katastarske parcele br.30/313=500m2 L.N.486 Osmani A Izet 1/1

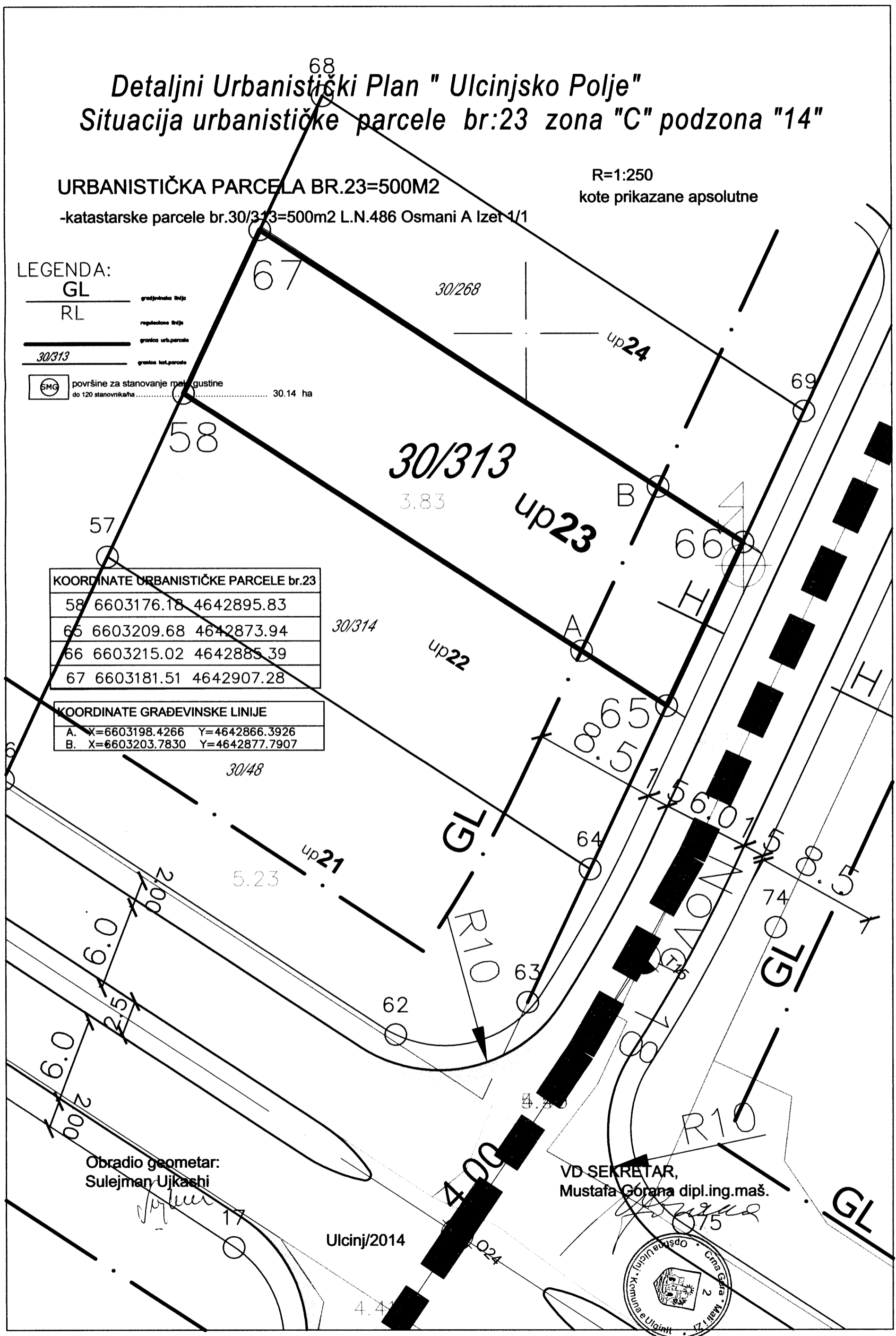
R=1:250  
kote prikazane apsolutne

LEGENDA:

- GL ————— gradjevinska linija
- RL ————— regulaciona linija
- granica urb.parcele
- granica kat.parcele
- 30/313 ————— granica kat.parcele
- SMG površine za stanovanje max. gustine do 120 stanovnika/ha 30.14 ha

KOORDINATE URBANISTIČKE PARCELE br.23		
58	6603176.18	4642895.83
65	6603209.68	4642873.94
66	6603215.02	4642885.39
67	6603181.51	4642907.28

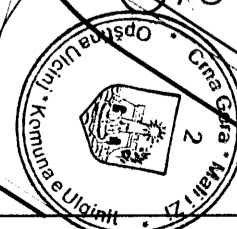
KOORDINATE GRAĐEVINSKE LINIJE		
A.	X=6603198.4266	Y=4642866.3926
B.	X=6603203.7830	Y=4642877.7907



Obradio geometar:  
Sulejman Ujkashi

VD-SEKRETAR,  
Mustafa Gorana dipl.ing.maš.

Ulcinj/2014



PRODUCED BY AN AUTODESK EDUCATIONAL PRODUCT

PRODUCED BY AN AUTODESK EDUCATIONAL PRODUCT