

# SITUACIJA URBANISTIČKE PARCELE BR.154 DUP"ULCINJ-GRAD" IZMJENA I DOPUNA LOKALITET PRISTAN

R=1:250

URB.PARC.BR.154=280M2

- KAT.PARC.BR.3118=257M2 L.N. 2329Husić Skender 1/1

-DIO KAT.PARC.BR.3083=23M2 L.N.604 Opština Ulcinj, raspolaganje-Svojina C.Gore

KOORDINATE TACAKA GRADJEVINSKIH LINIJA  
- ZONE ZA IZGRADNJU

368	6600317.45	4643089.22
369	6600326.34	4643083.70
370	6600328.70	4643082.66
371	6600330.95	4643082.16
374	6600314.01	4643083.93
375	6600322.49	4643075.74
376	6600327.31	4643073.60

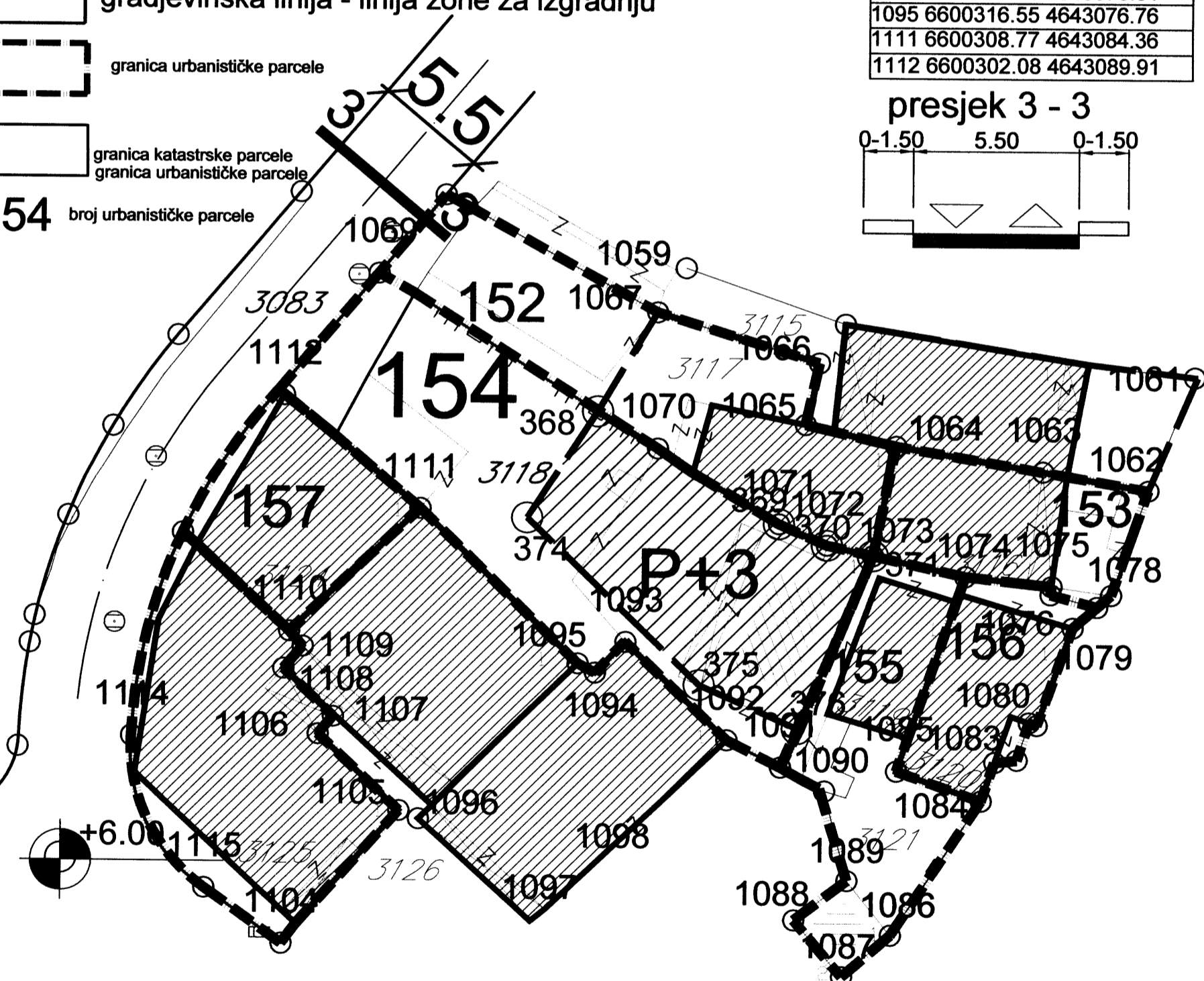
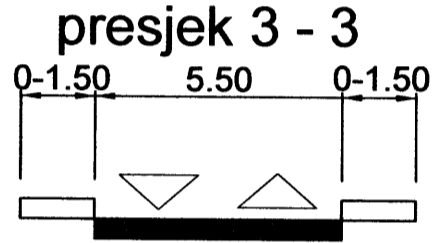
KOORDINATE TACAKA GRANICE  
URBANISTIČKE PARCELA

1069	6600306.67	4643095.96
1070	6600320.39	4643087.41
1071	6600326.34	4643083.70
1072	6600328.69	4643082.66
1073	6600330.95	4643082.16
1091	6600326.50	4643071.70
1092	6600323.87	4643073.02
1093	6600318.88	4643077.84
1094	6600317.40	4643076.31
1095	6600316.55	4643076.76
1111	6600308.77	4643084.36
1112	6600302.08	4643089.91

**Legenda:**

-  postojeći objekat
-  novi objekat
-  gradjevinska linija - linija zone za izgradnju
-  granica urbanističke parcele
-  granica katastrske parcele  
granica urbanističke parcele

**154** broj urbanističke parcele



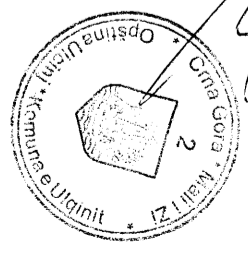
obradio geometar,  
Sulejman Ujkashi



V.D.SEKRETAR,-a  
Mustafa Gorana dipl.ing.maš.



Ulcinj/2015



PRODUCED BY AN AUTODESK EDUCATIONAL PRODUCT

PRODUCED BY AN AUTODESK EDUCATIONAL PRODUCT